

40274

36172



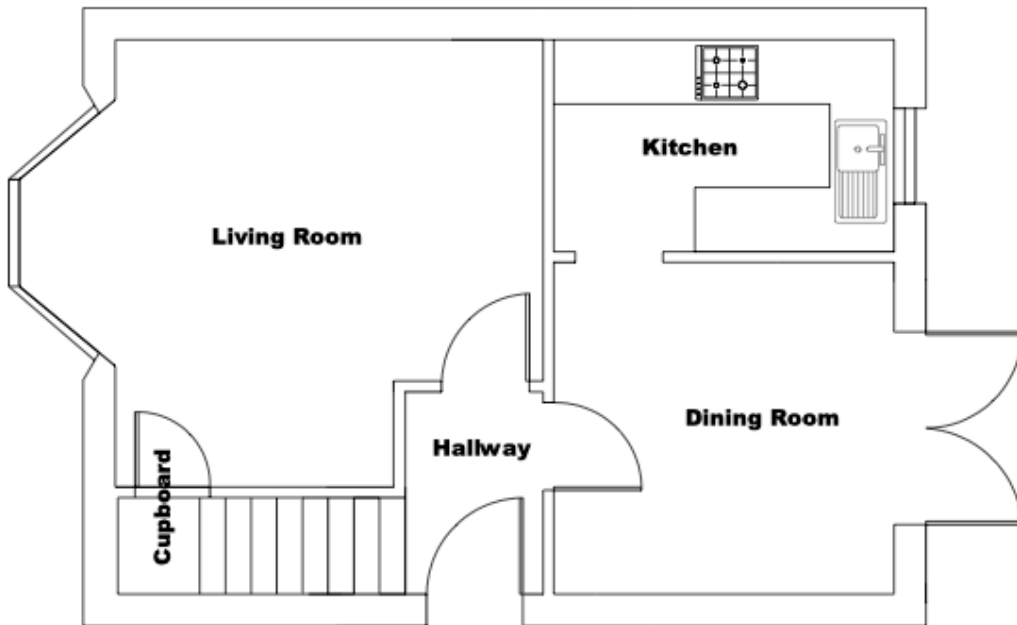
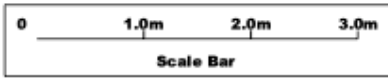
CASE STUDY

SINGLE STORY EXTENSION



SAMPLE 1

40274
36172



Existing Ground Floor Plan

5935

958

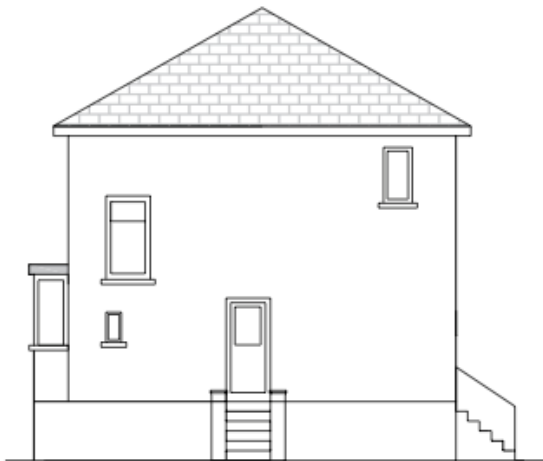
10308 15556

36172

SAMPLE 1

40274

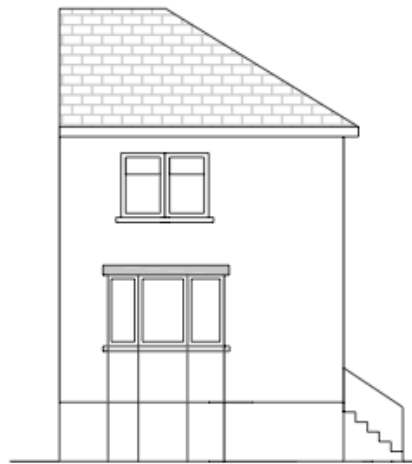
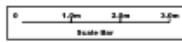
36172



Existing Side Elevation



Existing Rear Elevation



Existing Front Elevation

59

956

10308

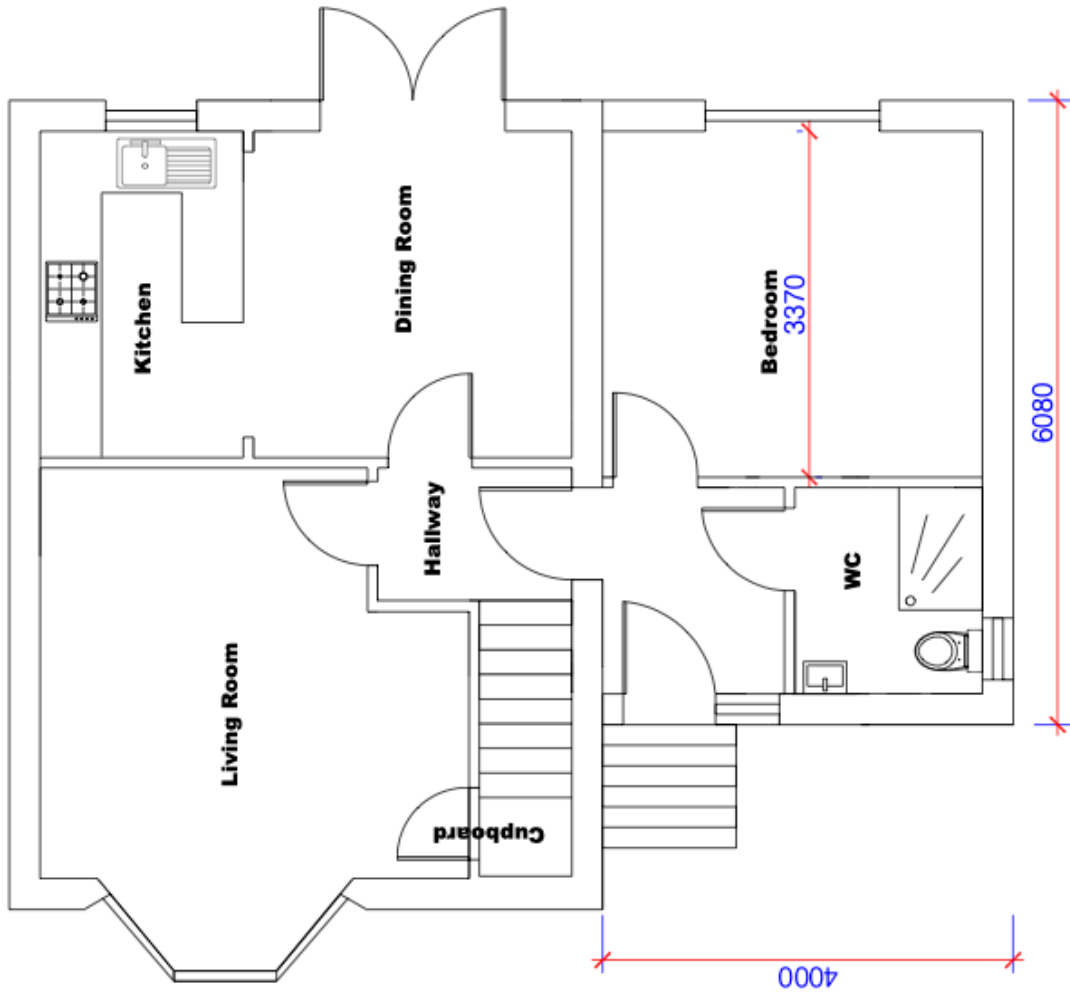
15556

36172

SAMPLE 1

40274

36172



Semi -Detached Property

Proposed Ground Floor Plan

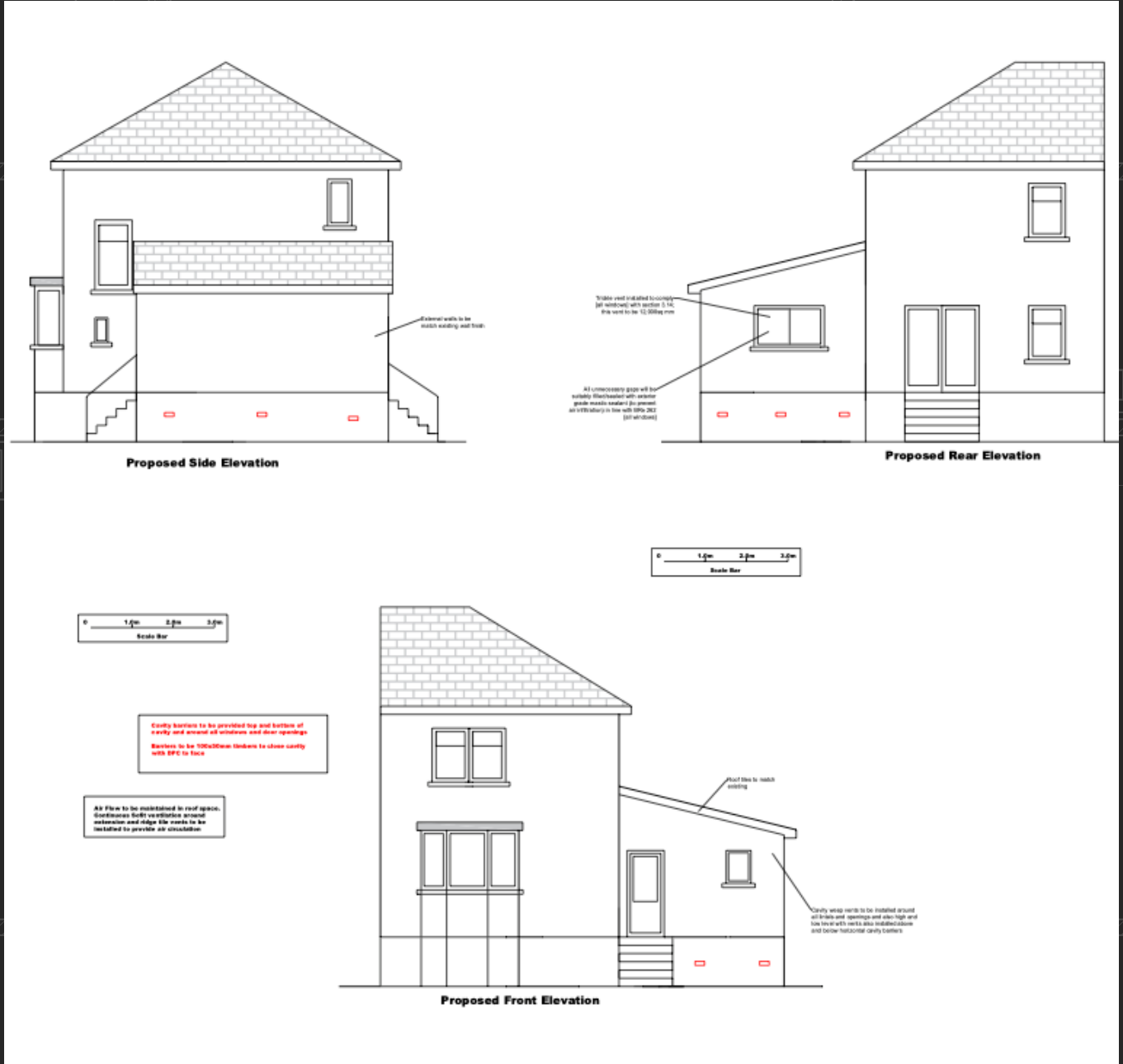
59

958

10308

15556

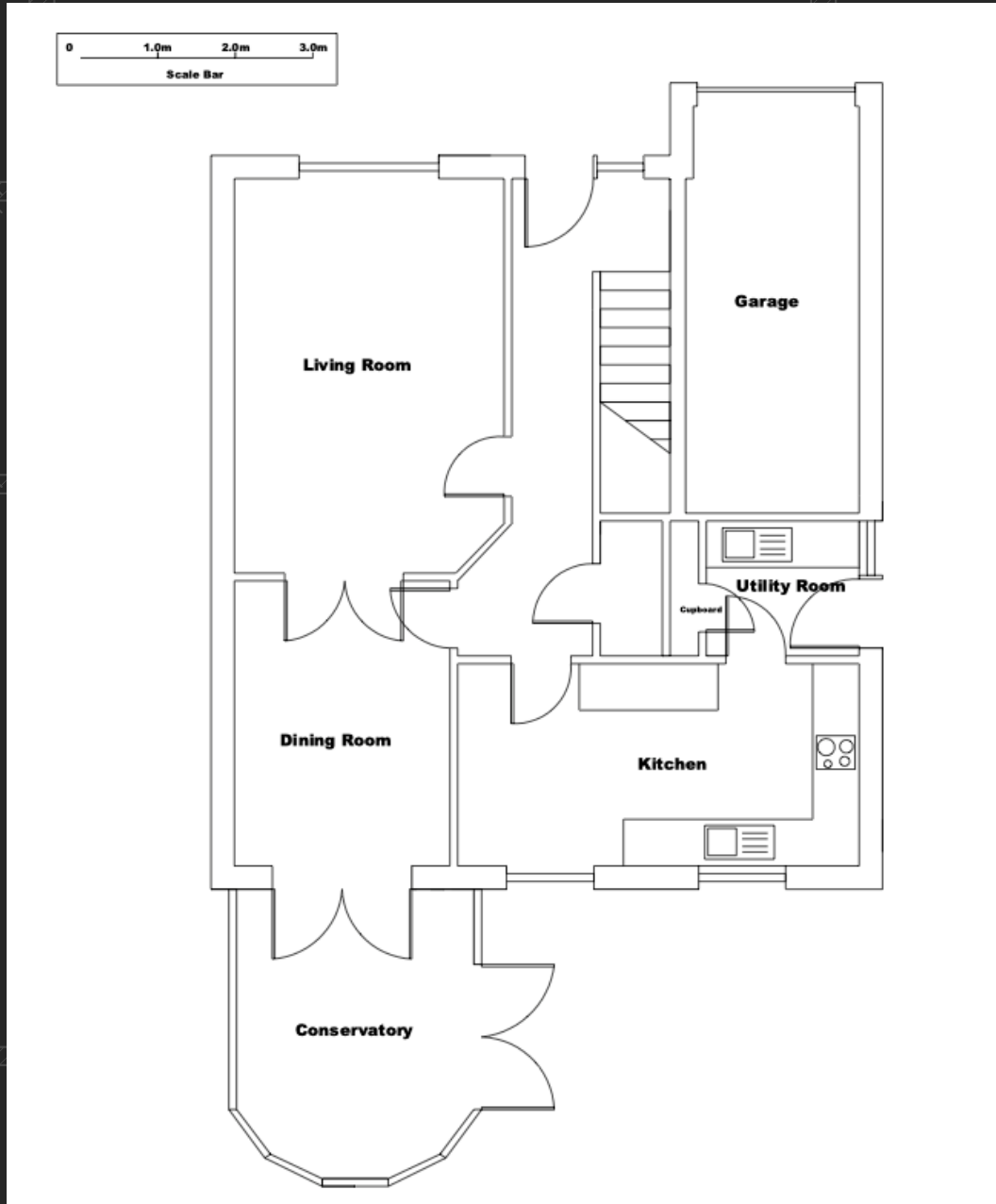
36172



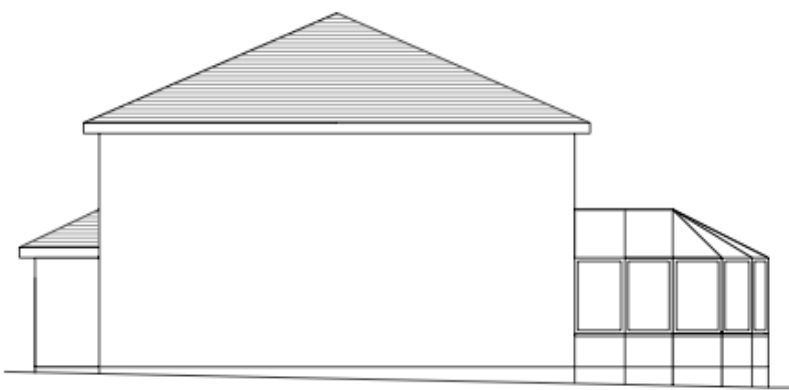
SAMPLE 2

40274

36172



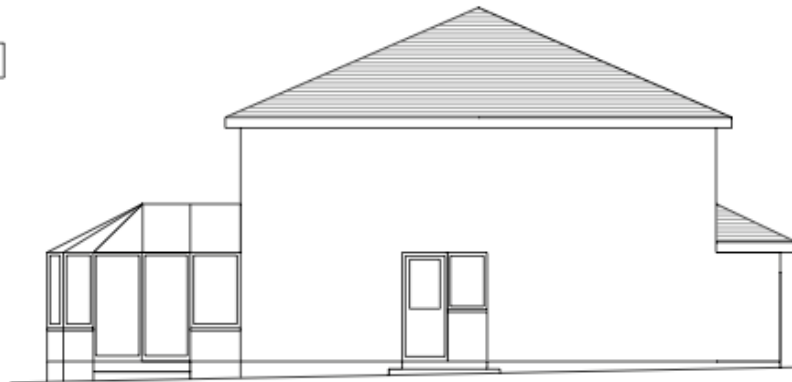
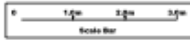
5935



Existing Side Elevation



Existing Rear Elevation



Existing Side Elevation (2)

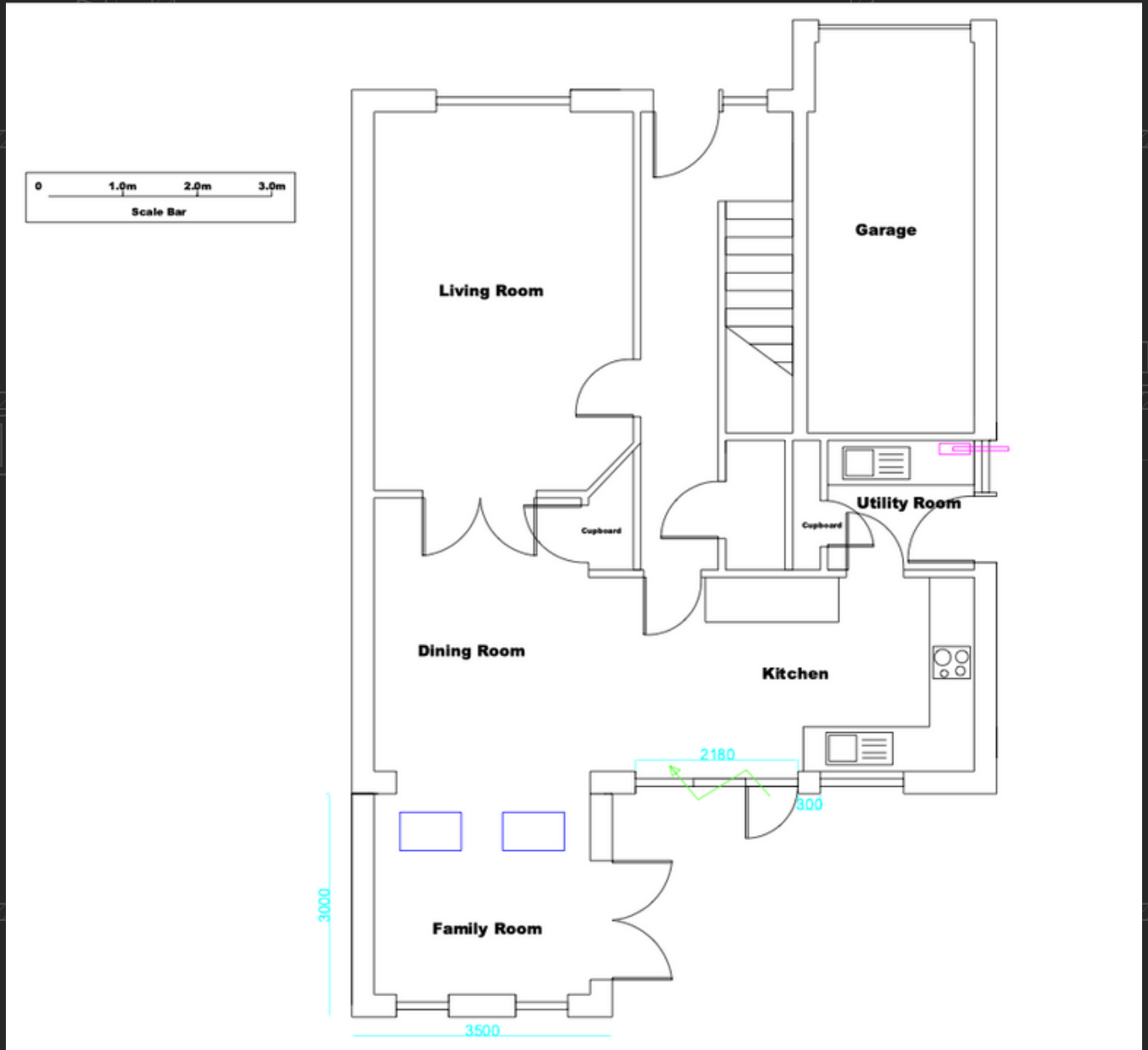
5935

238

958

10308

15556



35

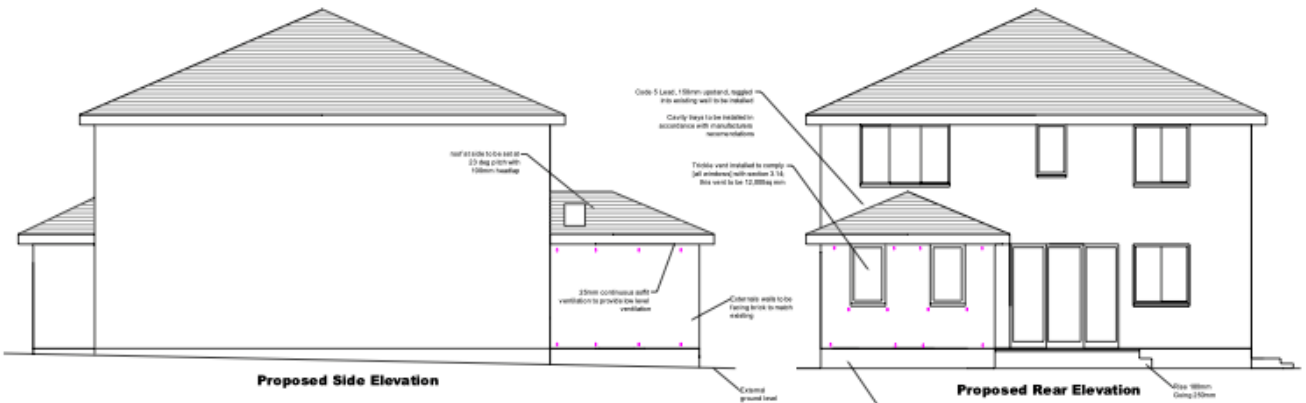
59

958

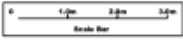
10308

15556

5935



Air flow to be maintained to roof space. Condensation risk ventilation around eaves and ridge line vents to be installed to give the air circulation.



Cavity barriers to be provided top and bottom of cavity and around all windows and door openings. Barriers to be 150x30mm fibrous to class cavity with DPC to face.

All unnecessary gaps will be suitably filled with intumescent fire grade mass sealant to prevent air infiltration in line with BS68 202 (all windows).



5935

236

958

10308

15556

36172